

workplan

Solutions

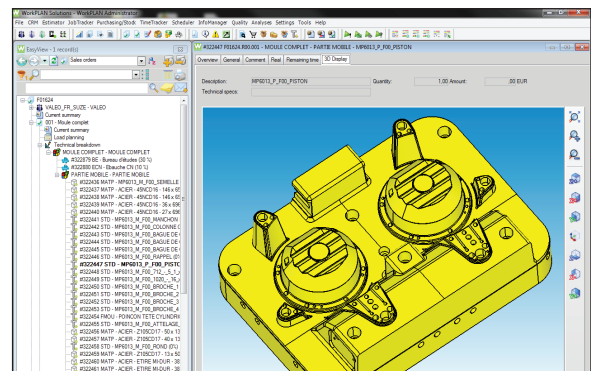
WorkPLAN Solutions V5 - New Features and Improvements

WorkPLAN Solutions V5 is a major release with more than 50 new features, which aim at improving ergonomics, ease of use and workflow throughout the different modules of the software.

WorkXplore 3D Native Interface

WorkXplore 3D is now integrated into WorkPLAN Solutions. A native interface has been developed to facilitate the automatic import of technical data from the CAD files opened and analyzed with WorkXplore 3D. Retrieving a complex assembly tree structure has never been so quick and easy. With only a few clicks, you can :

- Estimate budgets for raw materials
- Import a multi-level technical breakdown (part assemblies and sub-assemblies)
- Group together standard components from bills of materials
- Integrate all technical data
- Access 3D files associated with projects during the different manufacturing phases.



Import technical data from the CAD files

WorkPLAN Solutions on Mobile

Real time and secured database access. Using your smartphone or tablet, you can easily consult and navigate through the main aspects of your business activities:

- View and update supplier/customer data
- View quotations
- Access business data of your projects
- Access all types of files associated with quotations, jobs, invoices...



Real time and secured database access

Remote Time Entry: New Feature on Mobile

This new feature available in a brand new screen enables project managers, after sales staff and external stakeholders working on remote sites, to enter their time spent and assigning them directly to the correct projects. Using your smartphone or tablet, all you need is an internet connection and a password to use the new interface in real time.

W9	Mo	Tu	We	Th	Fr	Sa	Su
Service: AAL Job: M0927 Resource: JPAAL	8:00	3:00	0:00	7:00	8:00	0:00	0:00
Task: M0927.R00.001 - AJUSTAGE - PREPA EMPREINTE							
Service: AAL Job: M0931 Resource: JPAAL	9:00						
Task: M0931.R00.001 - AJUSTAGE - BRANCHELECTRIC							
Service: BE Job: M0863 Resource: PAT							
Task: M0863.R00.001 - ETUDE - Dossier Technique		2:00					
Service: CTRL Job: M1005 Resource: SEV							
Task: M1005.R00.001 - MARQU INDIR - PRESTA - Autre prestation							
Service: FAG Job: M1025 Resource: YANNICK				7:00			
Task: M1025.R00.001 - PROCEBANCHE							
Service: TOL Job: M1548 Resource: MAZARD							
Task: M1548.R01.006 - MAPOS - Tour CN					4:00		
Service: TOL Job: M1548 Resource: MAZARD							
Task: PROJ 5 AXES.R00.010 - Tour CN					4:00		

New Feature on Mobile

Follow us on

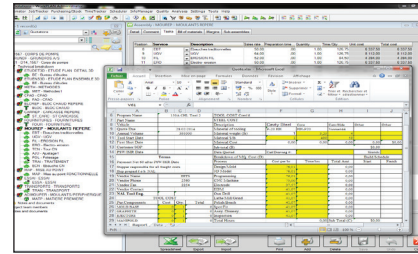
Twitter/sescoi

www.facebook.com/erp.mto

More Powerful Excel Interface

You already had the possibility to link your spreadsheets in order to create and manage quotations. A major enhancement now allows you to integrate even more complex data from a multi-level technical structure. When the interface is opened, you can input data into your customized spreadsheet and when you validate the data, the interface automatically imports the detailed technical structure without the need for double data entry.

You can therefore precisely estimate technical budgets adapted for all kinds of make-to-order manufacturing in different business areas.

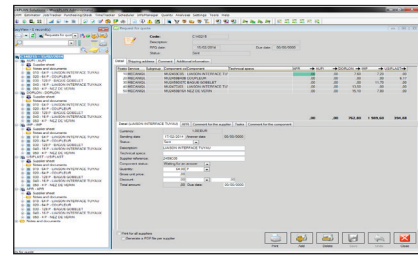


integrate complex data with a multi-level technical structure.

Improved Supplier RFQ (Request for Quotation) Module

Ten major enhancements have been brought to the software to facilitate the management of multi-supplier consultations. You will benefit from the same user interface as in the Purchase module and from new features in both the navigator and the main screen of the module.

A new overview screen gives you a better visibility of the consultation results. Decision making is based on 3 main criteria: price, delivery time and quality. For each consulted supplier, requirements are grouped together in a new view where you can find all technical data and project assignments.

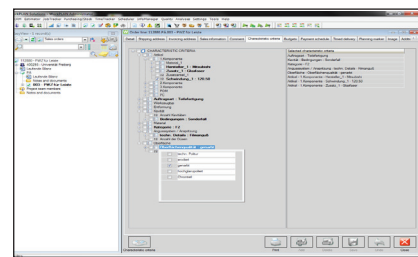


A new overview screen

More Powerful Characteristic Criteria

Each quotation or project in custom manufacturing has its own technical data and details. Capitalizing on existing experience is essential in order not to repeat the same mistakes. Enhancements of the characteristic criteria allows you to manage the links between the different criteria and exceptions to obtain near mini configurator functionality.

A context menu allows you to define the selection criteria ; multi-selection is enabled to quickly check available options that respect the constraints defined between the criteria. You can view the selected criteria on the right side of the user interface.

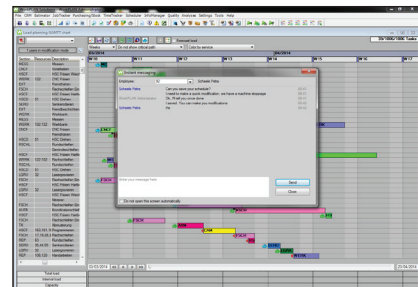


Enhancements of the characteristic criteria

A Host of Ergonomic Features, a Bonus for End Users :

In this new major release, several new features and enhancements aim at improving workflow when managing projects in WorkPLAN Solutions. Across the board, from quotations to quality control through design, manufacturing, technical data management, purchasing, scheduling and time management, the different modules of the software contain a range of new features.

- Backup of Outlook emails in an email folder
- Re-engineering of user and multi-site rights
- Optimized Document numbering
- Standard search bar ergonomics
- Launching external programs through touchscreens
- Multi-currency handling
- Improvement of the simultaneous access to scheduling...



instant messaging for planning users

VERO SOFTWARE

50 Boulevard du Général de Gaulle
71009 Macon Cedex - FRANCE
Tel. (+33) (0)385216621
Fax (+33) (0)385216622
www.workplan.com

vero
Software